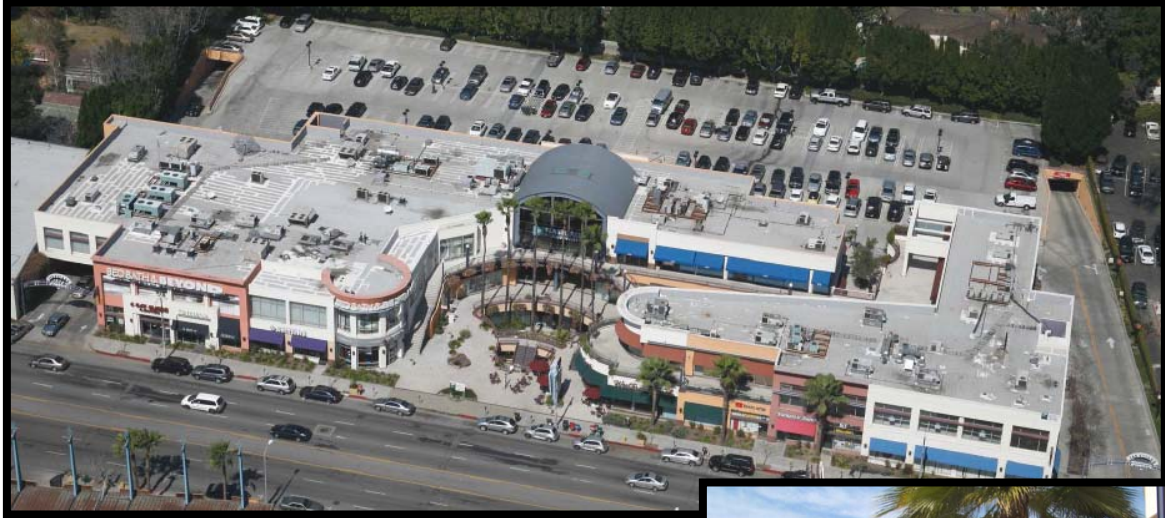


ENCINO COURTYARD

17401 VENTURA BLVD, ENCINO, CA 91316

RETAIL SPACE FOR LEASE



PROPERTY FEATURES:

- CLASS A 100,000 SQ. FT. CENTER WITH EXCELLENT FRONTAGE ON VENTURA BLVD
- ANCHORED BY BED, BATH AND BEYOND, BALLY'S TOTAL FITNESS, WESTERN BAGEL AND AT&T
- AMPLE FREE PARKING- NEARLY 500 SPOTS!
- DENSELY POPULATED AREA
- OVER 135,000 RESIDENTS AND NEARLY \$90,000 AVG. HOUSEHOLD INCOME WITHIN 3 MILES
- +/- \$100,000 AVERAGE INCOME WITHIN 3 MILES



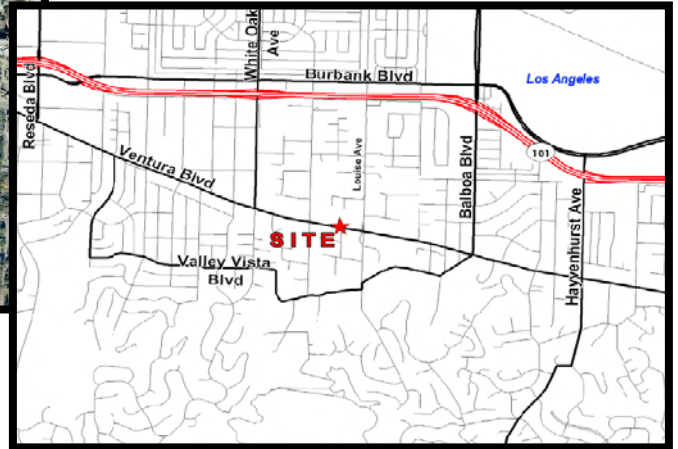
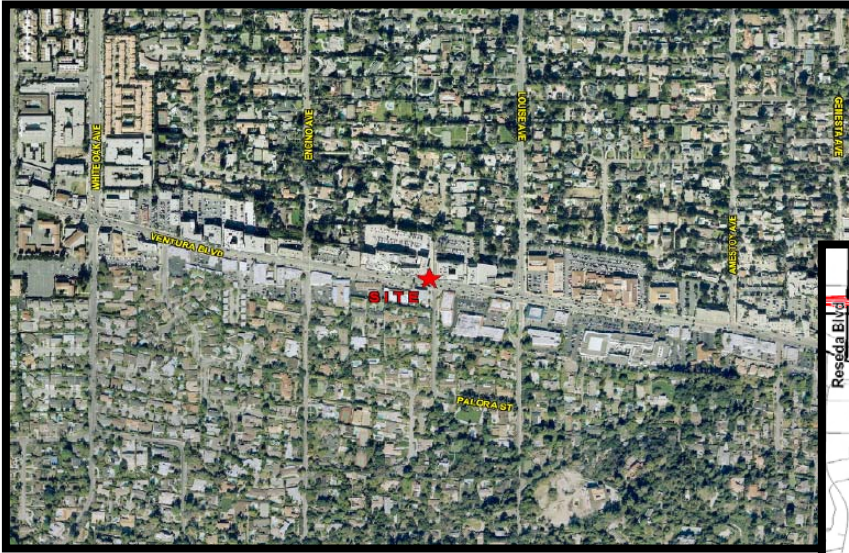
LEVY
AFFILIATED HOLDINGS, LLC.

FOR MORE INFORMATION,
PLEASE CONTACT
JONATHAN KOHN
310.451.5569

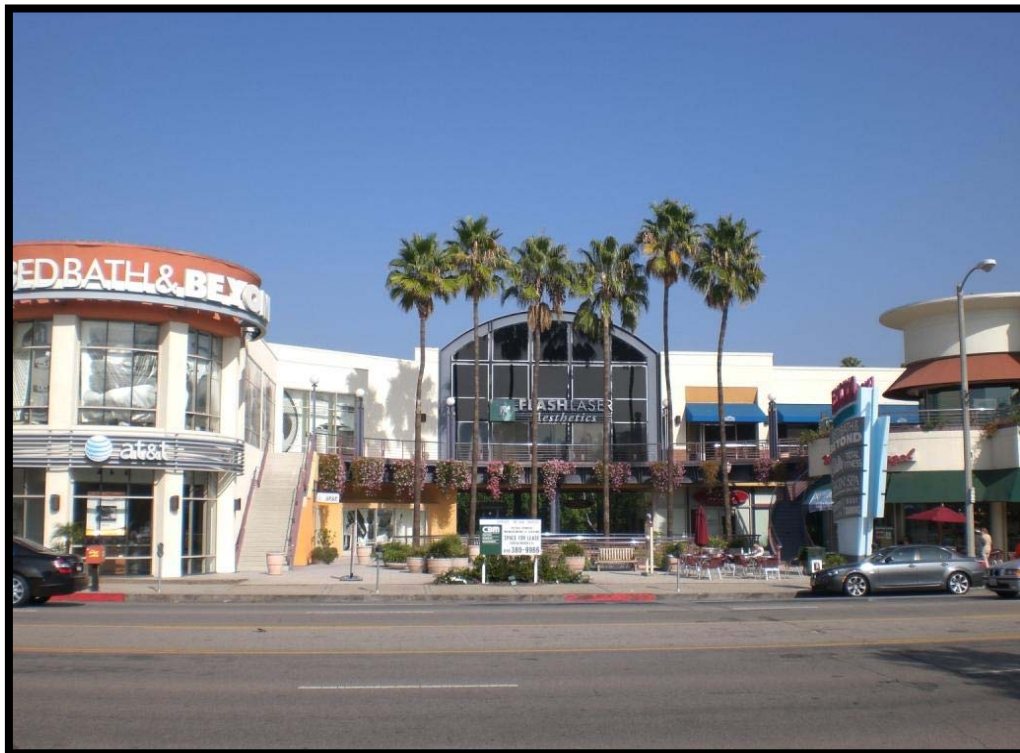
ENCINO COURTYARD

17401 VENTURA BLVD, ENCINO, CA 91316

AERIAL VIEW & LOCATION MAP



VIEW (PARTIAL) FROM VENTURA



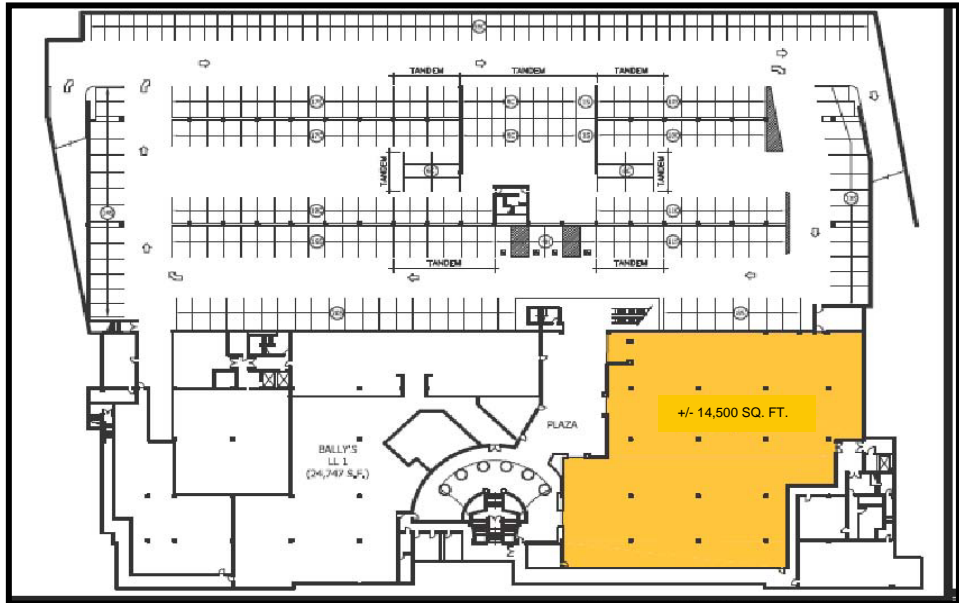
LEVY
AFFILIATED HOLDINGS, LLC.

FOR MORE INFORMATION,
PLEASE CONTACT
JONATHAN KOHN
310.451.5569

ENCINO COURTYARD

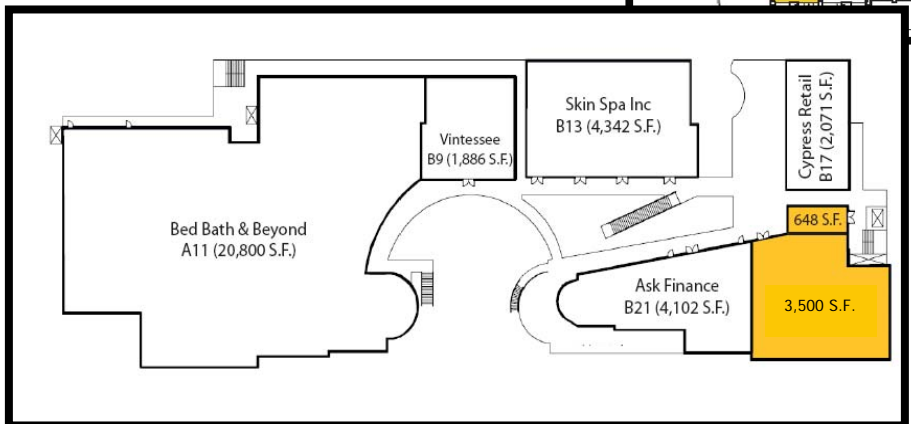
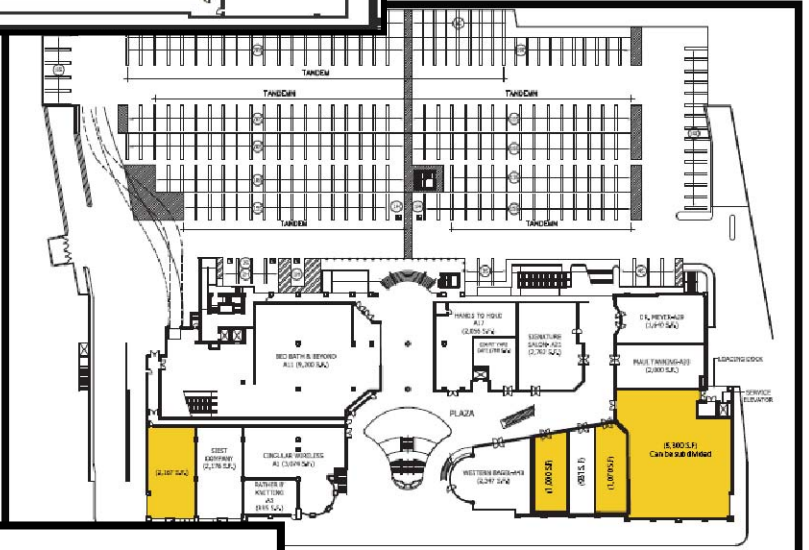
17401 VENTURA BLVD, ENCINO, CA 91316

FLOOR PLANS



LOWER LEVEL

GROUND LEVEL

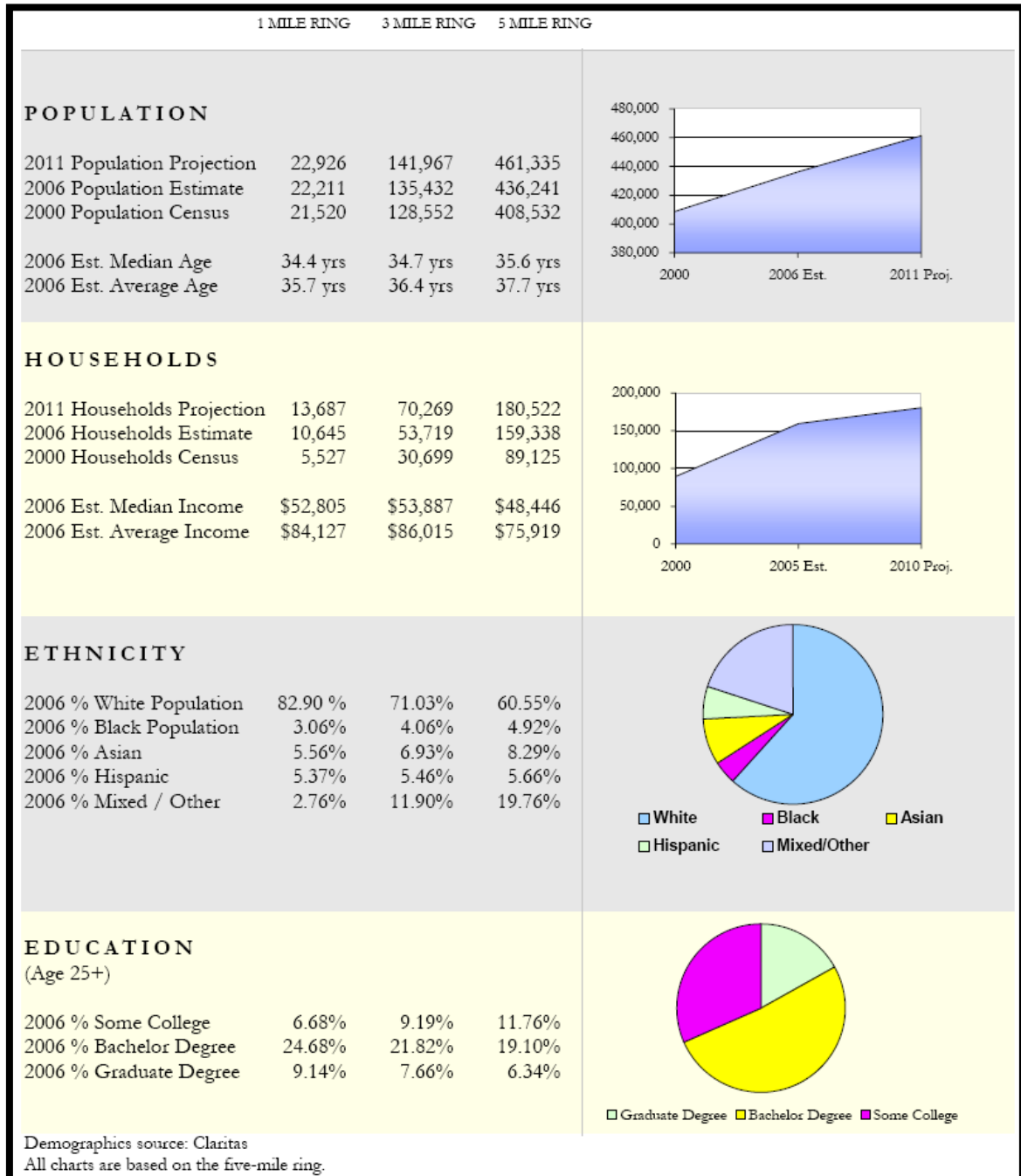


SECOND LEVEL

ENCINO COURTYARD

17401 VENTURA BLVD, ENCINO, CA 91316

DEMOGRAPHICS



LEVY

AFFILIATED HOLDINGS, L.L.C.

FOR MORE INFORMATION,
PLEASE CONTACT

JONATHAN KOHN

310.451.5569